

IPT1-1XX-XX-XX-D-XXX

No OF POS PER ROW
-02 THRU -25

OPTION

- POL: POSITION #1 REMOVED (USE IPT1-XX-D-P)
- FL: FRICTION LOCK (POS -05 THRU -25) (USE IPT1-XX-D-FL-X & T-1S64-XX-X)

LEAD STYLE
SEE TABLE 1, SHEET 2

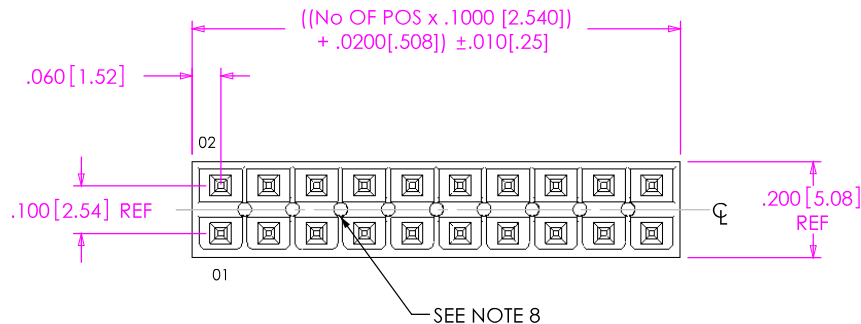
ROW SPECIFICATION

- D: DOUBLE (USE IPT1-XX-D-XX-X)

PLATING SPECIFICATION

- S: SELECTIVE GOLD (USE T-1S6-XX-S-2)
- SM: SELECTIVE GOLD, MATTE TIN TAIL. (USE T-1S6-XX-S-2)

DO NOT SCALE FROM THIS PRINT



SEE NOTE 8

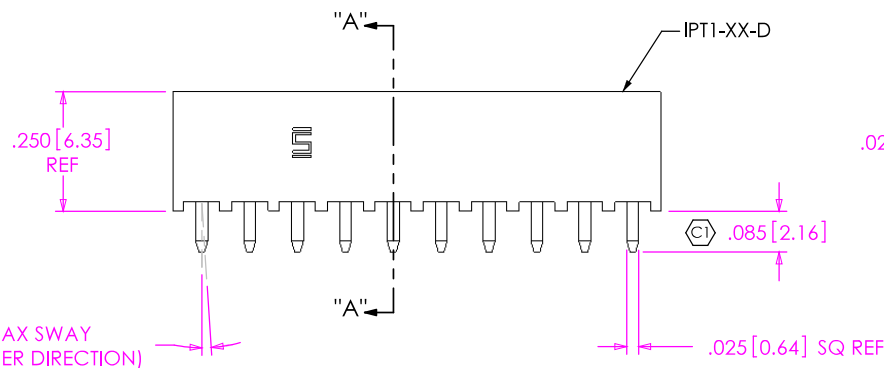
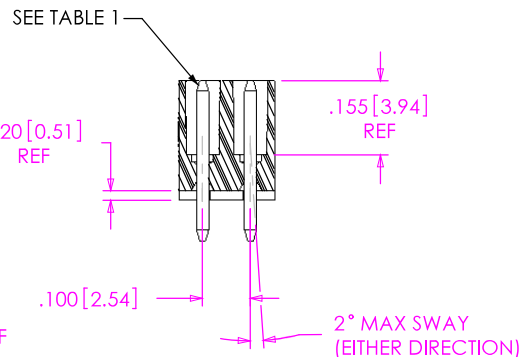
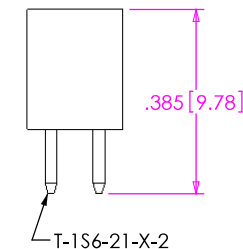


FIG. 1
IPT1-110-01-XX-D-XXX SHOWN



SECTION "A"-"A"

IN-PROCESS FOR -01 LEADSTYLE



NOTES:

- ⊕ REPRESENTS A CRITICAL DIMENSION.
- MAXIMUM ALLOWABLE CUT FLASH: .010 [.25].
- MINIMUM TERMINAL PUSH OUT FORCE: 2 lbs.
- MAXIMUM VARIATION BETWEEN PIN ROWS: .005 [.13].
- "END WALLS" AFTER CUTTING SHOULD BE .015+/-0.003 [.38+/-0.08].
- PARTS TO BE BULK PACKAGED.
- ALL DIMENSIONS TO BE ABOUT CENTERLINE WITHIN +/- .005 [.13].
- PRESENCE OF VOIDS IS OPTIONAL AND PATTERN TO WHICH THEY OCCUR IS VARIABLE.
- T PLATING OPTION AVAILABLE FOR EXISTING CUSTOMERS ONLY.

UNLESS OTHERWISE SPECIFIED, DIMENSIONS ARE IN INCHES.

TOLERANCES ARE:
DECIMALS ANGLES
.XX: ±.01 [.3] ± 2°
.XXX: ±.005 [.13]
.XXXX: ±.0020 [.051]

PROPRIETARY NOTE

THIS DOCUMENT CONTAINS INFORMATION CONFIDENTIAL AND PROPRIETARY TO SAMTEC, INC. AND SHALL NOT BE REPRODUCED OR TRANSFERRED TO OTHER DOCUMENTS OR DISCLOSED TO OTHERS OR USED FOR ANY PURPOSE OTHER THAN THAT WHICH IT WAS OBTAINED WITHOUT THE EXPRESSED WRITTEN CONSENT OF SAMTEC, INC.



520 PARK EAST BLVD, NEW ALBANY, IN 47150
PHONE: 812-944-6733 FAX: 812-948-5047
e-Mail: info@SAMTEC.com code: 55322

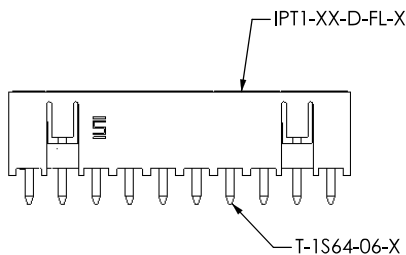
MATERIAL: DO NOT SCALE DRAWING SHEET SCALE: 1:0.4
INSULATOR: VECTRA E130i, COLOR: BLACK
CONTACT: PHOS BRONZE, 510, 3/4 HARD

DESCRIPTION:
.100 DOUBLE ROW SHROUDED TERMINAL ASSEMBLY

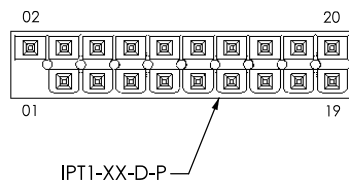
DWG. NO.
IPT1-1XX-XX-XX-D-XXX

BY: DEAN P 11-05-2002 SHEET 1 OF 2

-FL: FRICTION LOCK OPTION
IPT1-110-01-X-D-FL SHOWN



-POL: POLARIZED OPTION
IPT1-110-01-X-D-POL SHOWN



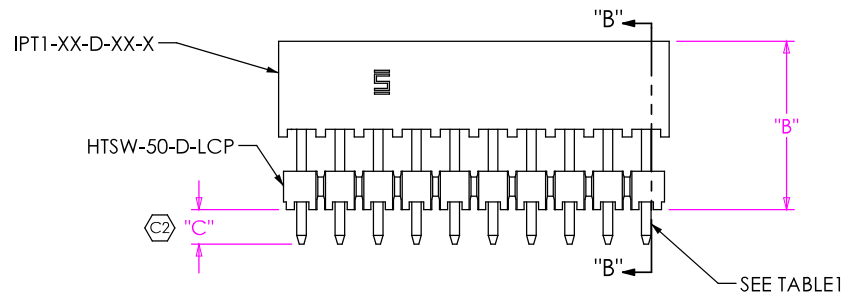


FIG. 2
IPT1-110-02-XX-D-XXX SHOWN

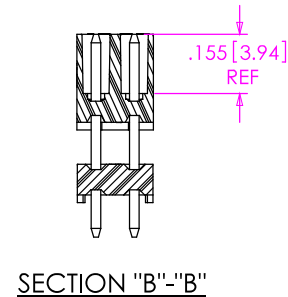



TABLE 1		BOARD STACK HEIGHT WHEN MATED WITH IPS1	TERMINAL	"C"
LEADSTYLE	"B"			
-01	N/A	N/A	T-1S6-21-X-2	
-02	.366[9.30]	.551[14.00]	T-1S6-26-X-2	.104[2.64]
-03	.445[11.30]	.630[16.00]	T-1S6-08-X-2	.085[2.16]
-04	.484[12.30]	.669[17.00]	T-1S6-24-X-2	.106[2.69]
-05	.563[14.30]	.748[19.00]	T-1S6-27-X-2	.097[2.46]
-06	.602[15.30]	.787[20.00]	T-1S6-23-X-2	.093[2.35]
-07	.799[20.30]	.984[25.00]	T-1S6-28-X-2	.091[2.31]
-08	.996[25.30]	1.181[30.00]	T-1S6-29-X-2	.094[2.39]
-09	1.193[30.30]	1.378[35.00]	T-1S6-30-X-2	.097[2.46]

F:\DWG\MISC\MKTG\IPT1-1XX-XX-XX-D-XXX-MKT.SLDDRW

PROPRIETARY NOTE
THIS DOCUMENT CONTAINS INFORMATION CONFIDENTIAL AND PROPRIETARY TO SAMTEC, INC. AND SHALL NOT BE REPRODUCED OR TRANSFERRED TO OTHER DOCUMENTS OR DISCLOSED TO OTHERS OR USED FOR ANY PURPOSE OTHER THAN THAT WHICH IT WAS OBTAINED WITHOUT THE EXPRESSED WRITTEN CONSENT OF SAMTEC, INC.

DO NOT SCALE DRAWING

SHEET SCALE: 2:1



520 PARK EAST BLVD, NEW ALBANY, IN 47150
PHONE: 812-944-6733 FAX: 812-948-5047
e-Mail: info@SAMTEC.com code: 55322

DESCRIPTION:
.100 DOUBLE ROW SHROUDED TERMINAL ASSEMBLY

DWG. NO. IPT1-1XX-XX-XX-D-XXX

BY: DEAN P 11-05-2002 SHEET 2 OF 2